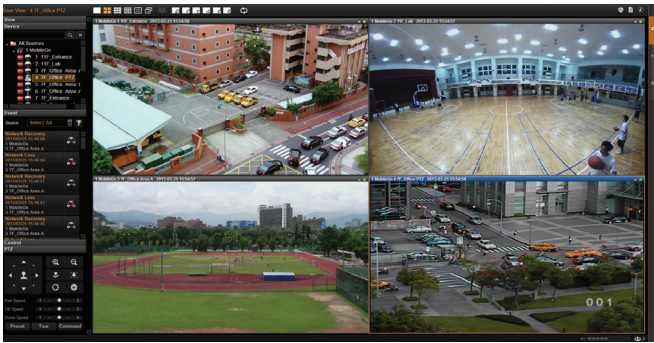


ACTi CMS v2.0

ACTi Central Management System

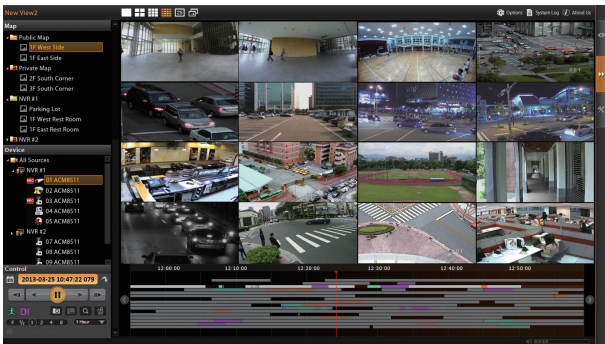
- Manage unlimited number of NVR servers
- Live view local up to 64 Channels
- Synchronized playback local up to 64 Channels
- Export video with RAW and AVI formats
- Event trigger, response and notification
- Mobile Client, Web Client, Workstation
- Location-based management with eMap
- TV Wall support by additional software license



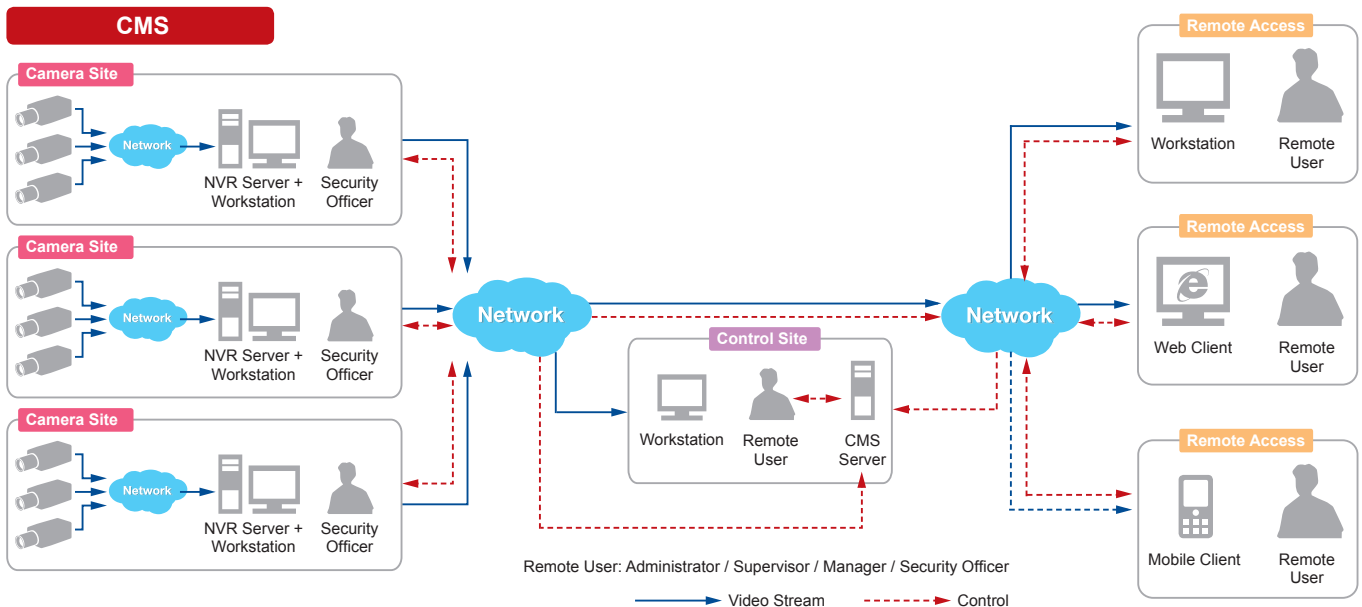
SPECIAL FEATURES

Up to 100-channel synchronized playback

Mobile client (iOS, Android) access



SOLUTION ARCHITECTURE



ACTi CMS v2.0

PRODUCT SPECIFICATION

CMS v2.0

• General

Full Name	ACTi Central Management System v2.0
Maximum Number of NVR	Unlimited
Maximum Number of Clients	1 local, 5 remote (concurrent)
Maximum Number of Cameras	Unlimited
Compression	H.264, MPEG-4, MJPEG
NVR Management	Import management settings of NVR servers

• Live View

Display Layout Mode	1, 4, 5, 6, 8, 9, 10, 12, 16, 18, 24, 25, 35, 36, 48, 49, 64, Custom
View Manager	An interface to define display layouts and the pre-set cameras within layout in the public or private view
View Patrol	Automatic switch between different views or devices
View Panel	Contains the list of pre-defined views for quick launch
Layout Manager	An interface to define display layouts and the pre-set cameras within layouts; full-screen mode available
Device Panel	Drag and drop video source from device panel into display layout
Digital Zoom	Zoom in/out digitally by mouse scroll wheel
Manual Recording / Snapshot	Instant recording to NVR 3.0 Server upon mouse click / Instant snapshot upon mouse click
Event Panel	Display event status upon alarm or upon connection loss or recovery between server and client or when the allocated disk space is full
Two-way audio	Audio sound from and to all the audio supported devices; audio broadcast to multiple devices at the same time
Dual Stream Management	Live view of stream 1 or stream 2 of dual stream devices

• e-Map

Layout	Area maps with camera icons, small live view windows; view linker; source linker; event trigger
Setup	e-Map image upload; camera positioning; vision angle and pointed direction of camera; view positioning; source positioning
PTZ Mode	Mouse PTZ mode to control e-Map video streams

• PTZ

Control	Pan, tilt and zoom controls; speed control; both buttons and overlay controls
Preset Points and Tours	Activate NVR preset points or auto tours between preset points
Joystick	USB based joystick supported
Default Protocol	Auto-detect camera's PTZ protocol. Available protocols: ACTi, Pelco-P, Pelco-D, Dynacolor, Visca

• Search & Playback

Recording Search	Search video recordings by time, event, channel from multiple NVRs, and listed as clickable thumbnails for full-size view and snapshot download
Playback Control	Continuous forward and backward playback with speeds 1x/2x/4x/8x or frame-by-frame; pause; stop
Synchronized Playback	64 channels
Manual Snapshot	Instant snapshot from playback upon mouse click
Digital Zoom	Zoom in/out digitally by mouse scroll wheel or by zoom control buttons
Video Export	Export video clips in AVI or RAW format; text overlay supported

• Event Management

Event Source	Receive events from multiple NVR servers
Event Trigger	NVR: source loss and recovery; schedule service start and stop; disk status Device: video motion detection; passive IR sensor; external device through digital input; video loss and recovery; network loss and recovery
Event Response	NVR: play beep sound; execute system command to activate other programs; E-mail notification Device: pop-up window with live video; switch to hotspot window; play beep sound
Manual Event	Manually activate external devices through digital output via live view monitor

• System

Permission Control	Unlimited number of users, Active Directory, Customizable permissions for user groups
Language	Multi-language support
Language Import/Export	Possibility to import or export language packs for convenient local language management
Customizable User Interface	Define the layout of user interface for live view and playback

• Remote Access

PC Client Program	User interface program (Workstation) with live view, PTZ, playback, e-Map, event management, setup
PC Web Browser	Microsoft Internet Explorer with live view, PTZ, playback, e-Map, event management, setup
Mobile Client Program	Mobile device application (Active Mobile Client) supports live view, PTZ control, event or time based search and playback. Supported devices: iPhone, iPad, iTouch and Android device

• System Requirements*

Display Mode	Live Layout	Channels	
		1-1,600	1,601-Unlimited
Server PC with Local Client	1-16	Intel Core 2 Quad 2.4 GHz, 4GB RAM	Intel i5 2.4 GHz, 4GB RAM
	17-64	Intel i5 2.4 GHz, 4GB RAM	Intel i7-920 2.67 GHz, 4GB RAM
Server PC without Local Client	0	Intel Core 2 Quad 2.4 GHz, 4GB RAM	Intel i5 2.4 GHz, 4GB RAM
	1-16	Intel Core 2 Quad 2.4 GHz, 4GB RAM	Intel i5 2.4 GHz, 4GB RAM
Remote Client PC	17-64	Intel i5 2.4 GHz, 4GB RAM	Intel i7-920 2.67 GHz, 4GB RAM
Operating System	Windows 7, Windows Server 2008, Windows Server 2003 SP2, Windows XP Professional SP3		
Browser	Microsoft Internet Explorer 8.0, 9.0, 10.0		

• Integration

Unified Solution	Fully compatible with ACTi cameras, encoders, NVR 3.0
Open Platform Solution	Support ONVIF compliant devices

* These specifications are based on following camera settings:

Single stream mode: 1280x1024, 3Mbps, 18fps, MPEG-4

Dual stream mode:

Stream 1 : 1280x1024, 3Mbps,18fps,H.264

Stream 2 : 640x480, High Quality, 18fps, MJPEG

For more details about system requirements, please refer to Project Planner on www.acti.com

* All specifications are subject to change without notice.

* All brand names and registered trademarks are the property of their respective owners.

www.acti.com

